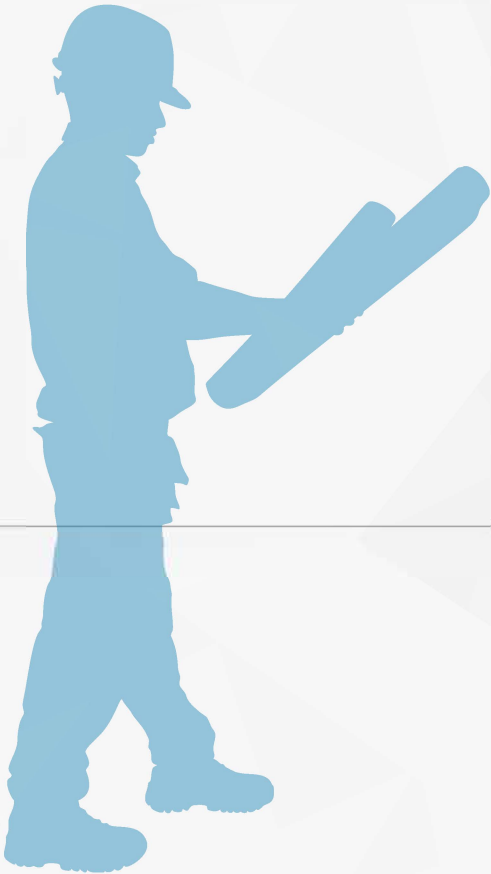


# **BEST BLOCK**

CONSTRUCTION MATERIALS



## **REDEFINING CONCRETE MASONRY**





## COMMITTED TO SERVE.

Committed to serving specifiers, contractors and installers across the country, Best Block manufactures the highest quality line of architectural and standard block as well as segmental retaining walls on the market. Offering products in a wide array of shapes, sizes, colors, textures and finishes, Best Block delivers strength, beauty and function to any residential or commercial project.

Architects and designers can choose from a complete line of architectural masonry products, including Split Face, Ground Face, Polished, Textured and Weathered block; residential and commercial brick; segmental retaining wall units; and landscape/hardscape products. Each has distinctive characteristics appropriate for the most discerning tastes and the most ornate designs.

Split Face block is created by literally splitting an existing block into two pieces. The rough-hewn surfaces on the faces of each "new" block provide a texture that is ideal for exterior fascades that call for dimension and interest.

Ground Face block is produced by grinding the face of each block to expose the aggregate blends and pigments. This smooth surface provides the look of natural, quarried materials such as limestone and granite at a fraction of the cost, and is appropriate for both interiors and exteriors.

Polished block is our new line of architectural block, and made by using superior colored aggregates and a new state-of-the-art polishing machine, which uses 10 natural stone heads to expose and buff the aggregates of the block to achieve a hi-gloss finish, similar to that of polished granite or marble.

Textured block achieves a texture that exposes the depth of the natural aggregate, giving it a 3-D effect—something you'd have to feel to believe.

Weathered block provides a rustic, weather-worn look to products. Almost antique-like in appearance, the weathered finish adds the appearance of graceful age, as if the blocks had been gently shaped

by years of weather, while the casual pattern adds an element of surprise.

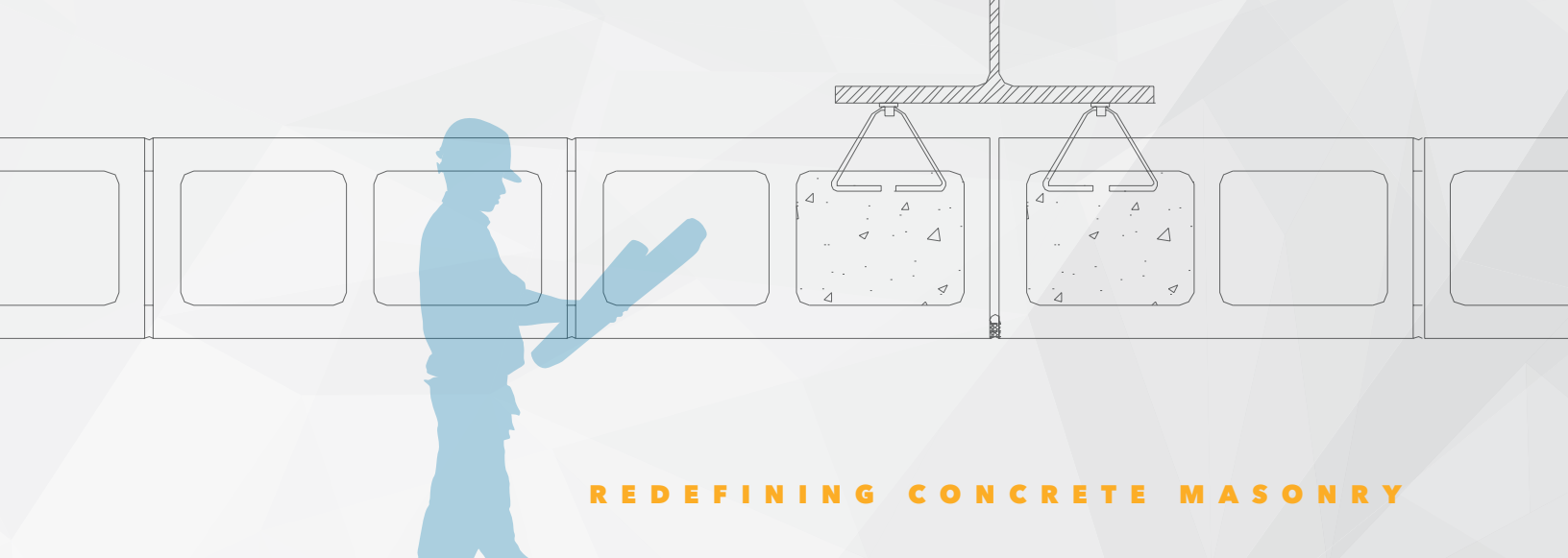
We are committed to sustainable business practices and products, and are proud to participate in the U.S. Green Building Council's LEED program. Production specifications ensure unsurpassed strength while respecting the environment. Options offer flexibility and freedom with most any architectural design.

At *Best Block*, we continually strive to offer you innovative products, unlimited design options, and the uncompromising level of trust we've built our reputation on.

To request a complimentary sample box—please visit our website at **[bestblock.com](http://bestblock.com)**







## REDEFINING CONCRETE MASONRY



**Pizza Hut Park** - Frisco, Texas  
HKS Architects, Split Face & Ground Face CMU

**Caddo Mills Administration Building** - Caddo Mills, Texas  
Corgan & Associates, Split Face CMU



# STRENGTH + SUSTAINABILITY

**Best Block** is committed to sustainable business practices and products, and is proud to participate in the U.S. Green Building Council's LEED program. We have seven production facilities located throughout our area to reduce shipping distance to any jobsite. A key contributor to the sustainability of our concrete masonry units is the use of fly ash in many of our products (a resource recovered from burning coal to create electricity). The use of fly ash to replace cement reduces demand for cement itself, which helps in reducing CO<sup>2</sup> emissions during the manufacturing process. Additionally, our concrete block is 45-80% recyclable. This is done by using "damaged" or "unusable" concrete blocks (or using material spillage from the manufacturing process), which is then crushed, screened and sorted, then recycled into new block as aggregate.

## Sustainable Solutions for LEED

**7 Manufacturing Plants** throughout the State of Texas and into Louisiana

**Commitment** to sourcing local raw materials

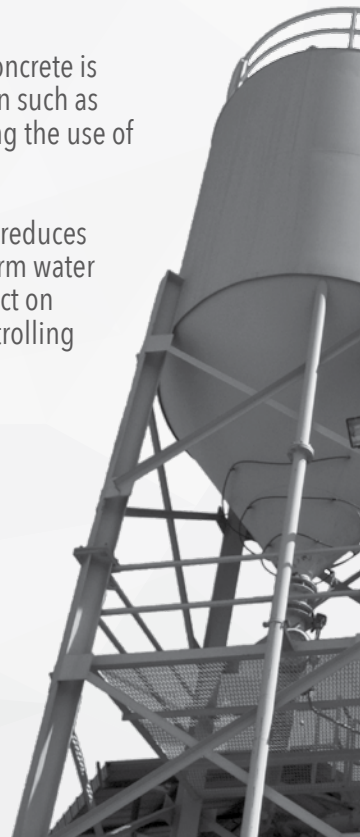
**100% Locally Harvested/Extracted** materials used in the manufacturing of *Best Block* CMU

**Pre and Post-Consumer Recycled Content** is included by plant location

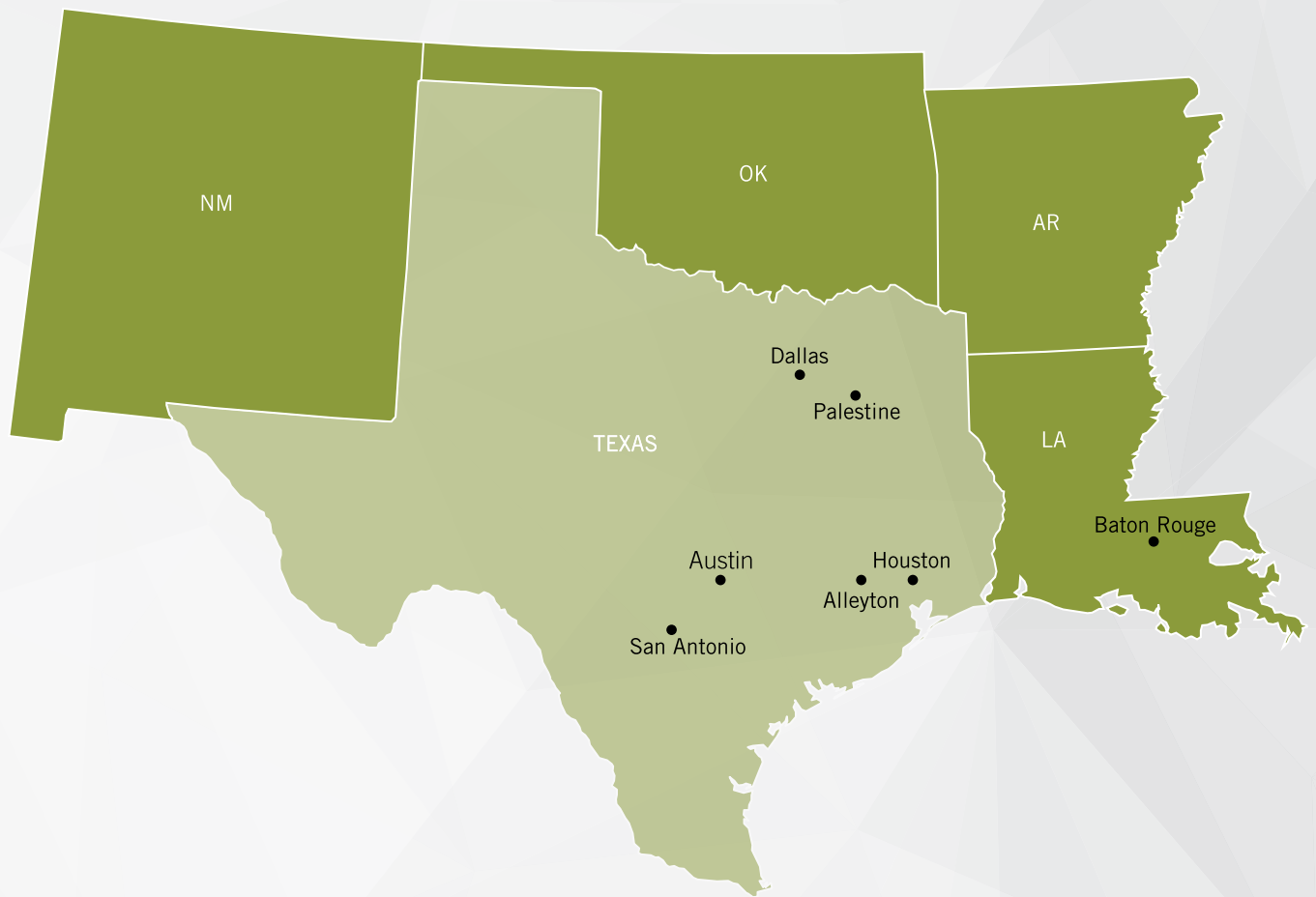
**Thermal Mass:** A masonry wall assembly can easily achieve Hi R-values and improve energy efficiency above ASHRAE prerequisites

**Concrete is Recyclable - 45 - 80%** of concrete is usable as an aggregate in new construction such as roads, sidewalks and concrete slabs, sparing the use of virgin materials

**Segmental Retaining Walls & Pavers** reduces heat island effect, assists in controlling storm water runoff and erosion control, minimize impact on environmentally sensitive areas while controlling developmental density







**Best Block** has seven manufacturing plants strategically located across the State of Texas and into Louisiana to reduce the shipping distance to your project. We are committed to sourcing local materials to manufacture our products. Please refer to the map *above* to determine manufacturing locations within 500 (approximate) miles of your project.

Please contact your local Architectural Representative for information on how *Best Block* can help contribute to your LEED project objectives:

North Texas – **(888) 202.9272**

Houston – **(713) 397.8098** or **(713) 213.8096**

San Antonio – **(888) 464.2399** or **(210) 912.9946**

Louisiana – **(225) 355.3312**

Email – **[blockinfo@bestblock.com](mailto:blockinfo@bestblock.com)**

**R E D E F I N I N G   C O N C R E T E   M A S O N R Y**



## STRENGTH+EDUCATION

This striking facility was the sixth high school designed by WRA Architects for Garland ISD. Their design using rugged masonry and metal roofing in a Texas Vernacular theme is an identity the City of Sachse later adopted.



**Project Name:** Sachse High School  
Sachse, Texas

**Product:** Ground Face CMU  
Split Face CMU

**Architect:** WRA Architects



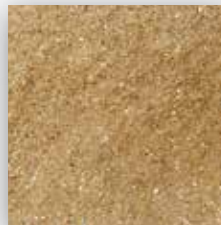




**Project Name:** Caddo Mills High School  
Caddo Mills, Texas

**Product:** Split Face CMU  
Smooth Face CMU

**Architect:** Corgan & Associates



TEXAS BUFF SPLIT FACE



LIMESTONE SPLIT FACE



FLINT SPLIT FACE

Three contrasting colors of concrete masonry units are used in this Caddo Mills High School. The architect enables their full creativity by combining design elements of three colors that exceptionally enhance the look of the institution.



**REDEFINING CONCRETE MASONRY**



**Project Name:** Hallsville High School  
Hallsville, Texas

**Product:** Ground Face  
Split Face CMU

**Architect:** Thacker-Davis Architects





**Project Name:** Sarah Hollenstein Career Tech  
Fort Worth, Texas

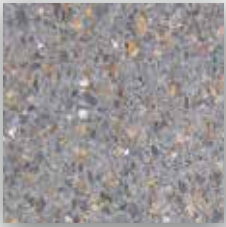
**Product:** Ground Face CMU

**Architect:** VLK Architects

The goal of this 126,000 square foot center is to provide leadership in developing an educated, prepared, adaptable and competitive workforce. This project was developed using an "inside-out" approach, where designers first looked at the detailed adjacency requirements within each academy.



**R E D E F I N I N G   C O N C R E T E   M A S O N R Y**



SMOKE GROUND FACE



ALAMO BUFF SPLIT FACE



SMOKE SPLIT FACE

**Project Name:** Fox Tech High School  
San Antonio, Texas

**Product:** Ground Face CMU  
Split Face CMU

**Architect:** O'Neill Conrad Oppelt



Designed to resemble a concert hall, this stately and sophisticated structure is home to Fox Tech High School's music department. The Burnished masonry units provide a spectrum of color and a smooth, reflective surface, while Split-face blocks balance the façade by adding a rough texture and dimension.





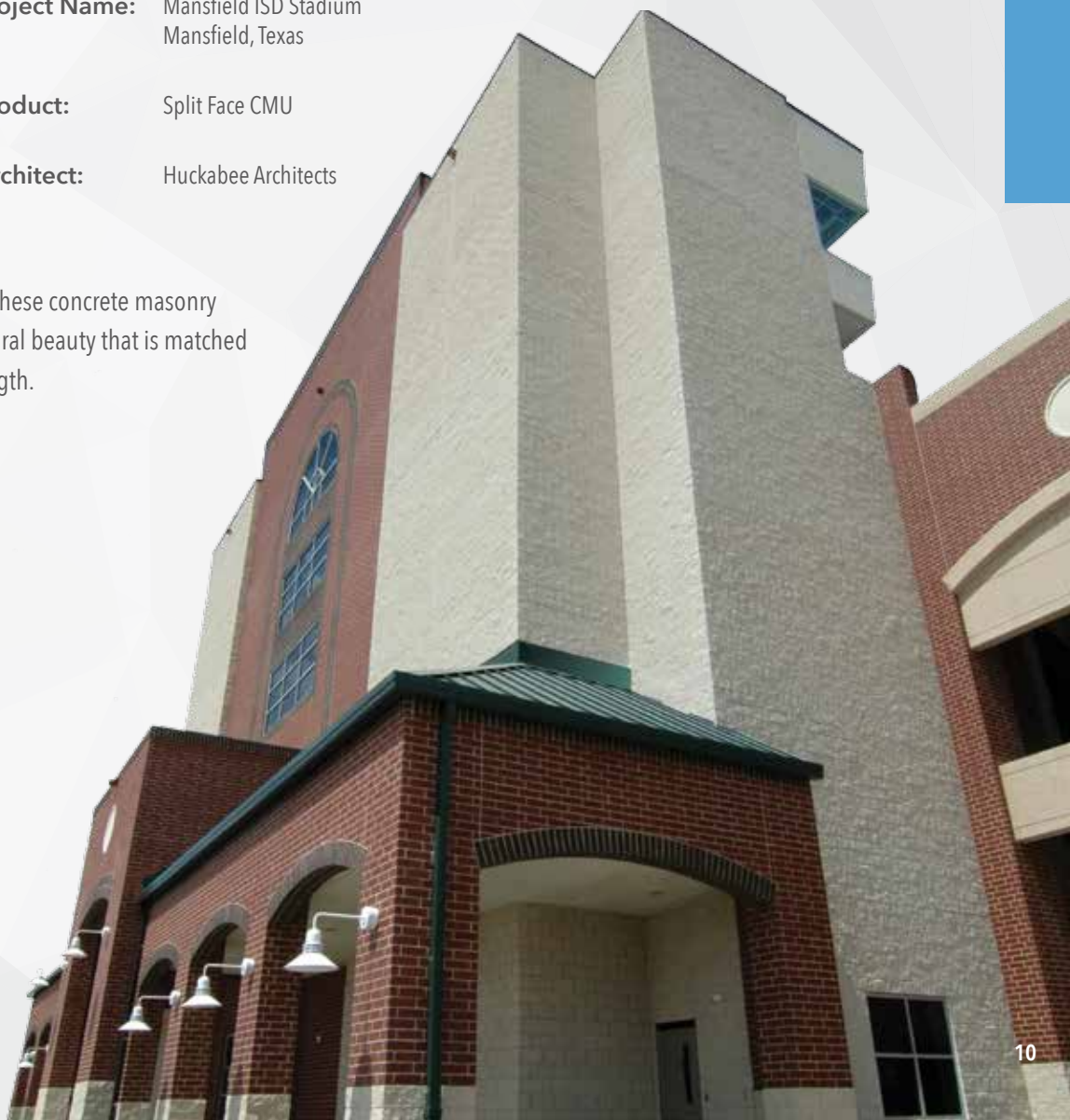
LIMESTONE SPLIT FACE

**Project Name:** Mansfield ISD Stadium  
Mansfield, Texas

**Product:** Split Face CMU

**Architect:** Huckabee Architects

Using high-quality materials, these concrete masonry units deliver a distinctive, natural beauty that is matched only by their remarkable strength.





# COMMERCIAL INDUSTRIAL



**Project Name:** Hemis View Apartments  
San Antonio, Texas

**Product:** Ground Face CMU

**Architect:** Beller Guest Owens

Our client wanted to achieve a look of old brick blends from the 1930's & 1940's for a large scale building. We were able to reproduce this type of brick blend look using a custom color combination with oversize CMU. Oversize CMU (4" x 16" x 32") lends itself well to large scale wall structures with a high degree of aesthetic appeal. Custom blends provide visually stunning, yet structurally sound wall structure.







**Project Name:** Lowe's  
Lindale, Texas

**Product:** Split-Face CMU

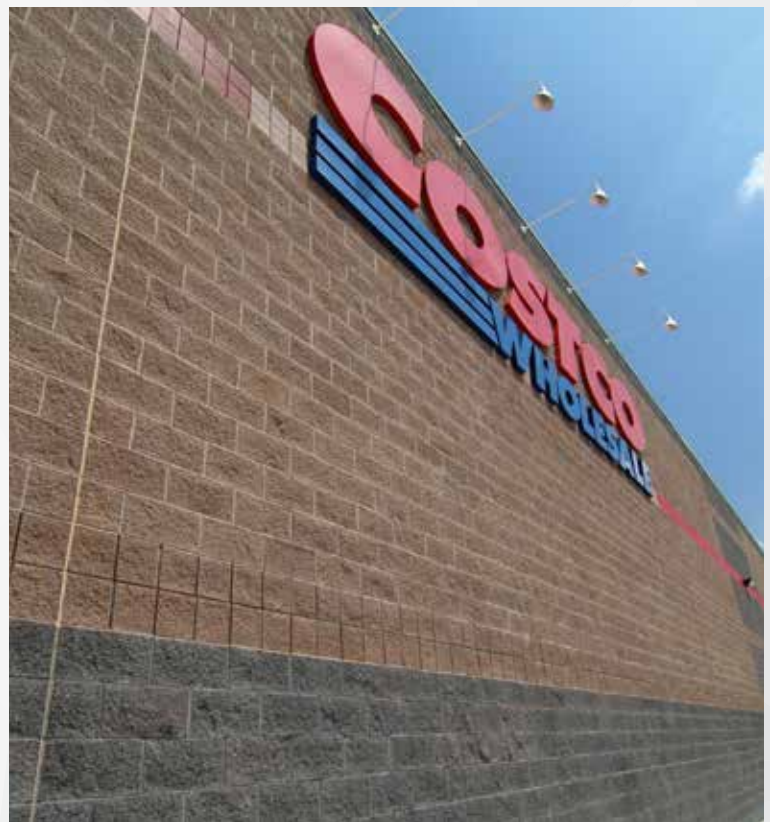
**Architect:** MDN Architects

**Lowe's, one of the largest home-improvement retailers in the U.S.,** opts for custom color blends to compliment its widely recognized logo. Additionally, these *Best Block* materials provide high fire-resistance and energy-efficient ratings to the structure, thereby incorporating safety and cost-saving benefits.

**Project Name:** Costco  
Lewisville, Texas

**Product:** Custom Color Blends  
Split-Face CMU

**Architect:** Mulvanny G2 Architecture





SHADOW BROWN SPLIT FACE



TEXAS BUFF SPLIT FACE



LIMESTONE SPLIT FACE

**Project Name:** Sam's Club  
Fort Worth, Texas

**Product:** Split Face CMU

**Architect:** Raymond Harris  
& Associates, Architects







**Project Name:** Wal-Mart Supercenter  
Allen, Texas

**Product:** Split Face CMU



REDEFINING CONCRETE MASONRY



# GOVERNMENT INSTITUTIONAL

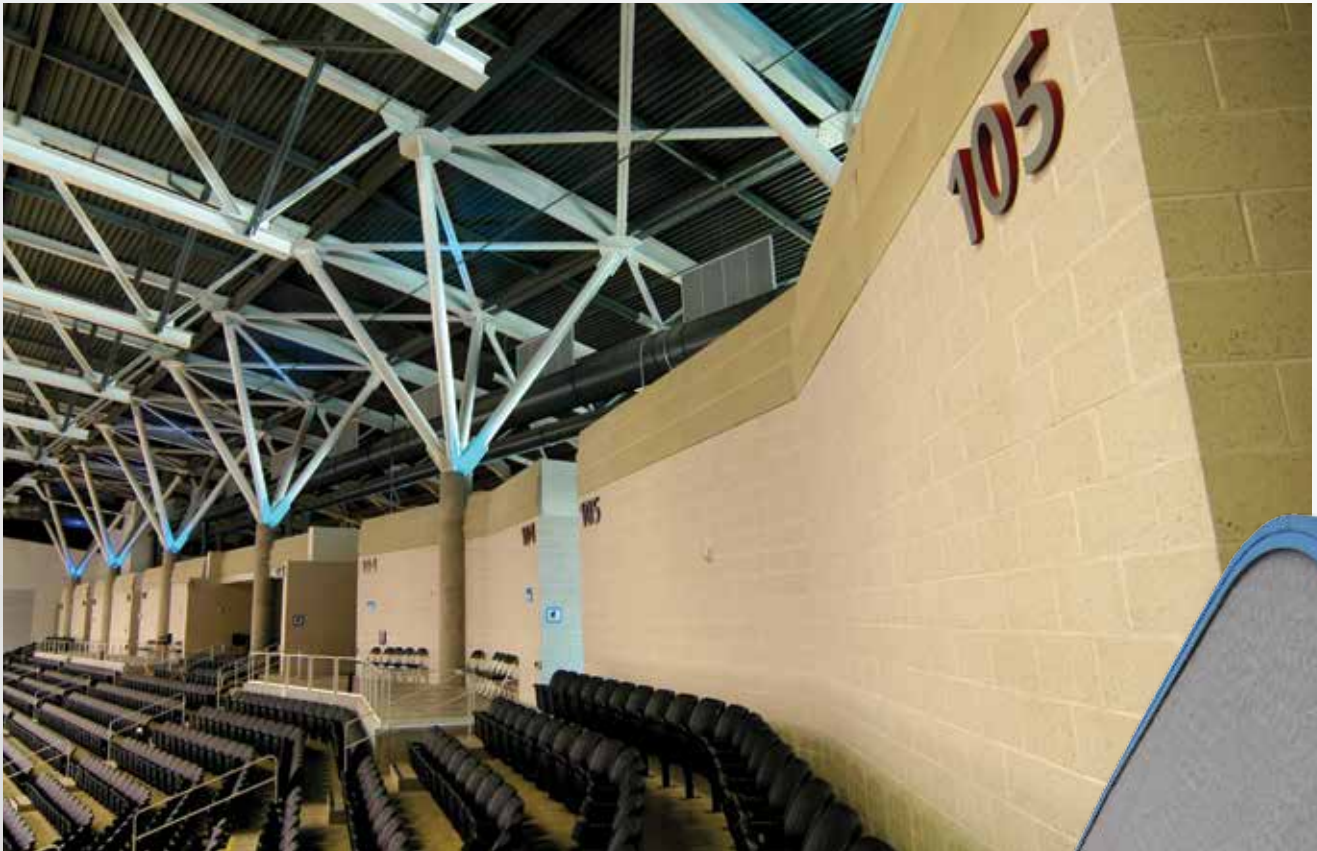


LIMESTONE SPLIT FACE

**Project Name:** Garland Events Center  
Garland, Texas

**Product:** Ground Face CMU  
Split Face CMU

**Architect:** HKS Architects







**Project Name:** St Alberts of Trepani  
Houston, Texas

**Product:** Split Face CMU

**Architect:** Heimsath Architects



TERRA COTTA SPLIT FACE



**REDEFINING CONCRETE MASONRY**



FLINT SPLIT FACE



LIMESTONE SPLIT FACE & SMOOTH



DESERT BROWN SPLIT FACE

**Project Name:** Caddo Mills ISD Administration Buidling  
Caddo Mills, Texas

**Product:** Split Face CMU  
Smooth Face CMU

**Architect:** Corgan & Associates





WHITE LIMESTONE POLISHED



WHITE LIMESTONE SPLIT FACE



GREY GRANITE SPLIT FACE

**Project Name:** Eunice Lake Recreational Project  
Eunice, Louisiana

**Product:** Polished CMU  
Split Face CMU

**Architect:** Hoffpauir Design Studio



REDEFINING CONCRETE MASONRY



## SPEC-BRIK

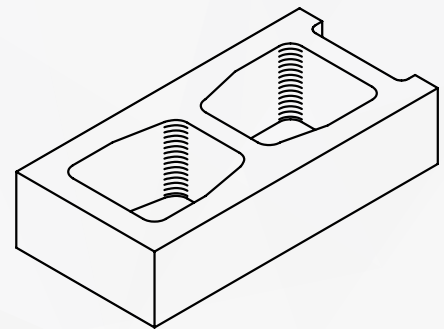
Spec-Brik® units provide the rich look and beauty of real brick, with the structural performance and functionality of concrete masonry units. Its size and scale allows faster installation that generates time and cost savings that keeps construction costs to a minimum. Spec-Brik units are energy efficient, mold and fire resistant, and are manufactured using Water Control Technology™ for dry single wythe walls.



**Project Name:** WalMart Neighborhood Market  
Farmers Branch, Texas

**Product:** Spec-Brik

**Architect:** Brinkley Sargent Architects



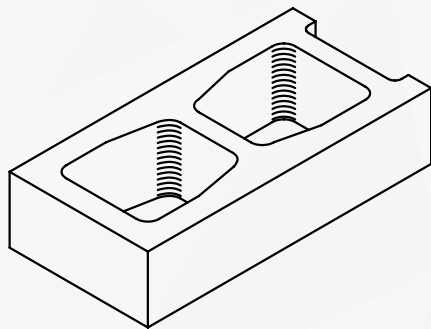




**Project Name:** Christian Brothers Automotive  
Euless, Texas

**Product:** Spec-Brik

**Architect:** Icon Architects



**REDEFINING CONCRETE MASONRY**



## RETAINING WALL

VERSA-LOK provides the best value in segmental retaining wall solutions for everything from intricate landscaping features to tall, commercial walls. VERSA-LOK units offer a pleasing appearance and endless design options, while also delivering the most cost-effective and stable retaining wall systems.



**Project Name:** Randolph Federal Credit Union  
San Antonio, Texas

**Product:** Versa-Lok Mosaic

**Architect:** Chesney Morales & Associates





**Project Name:** Lifetime Fitness Center  
San Antonio, Texas

**Product:** Versa-Lok

**Architect:** Hodges & Associates

**Project Name:** Private Residence

**Product:** Keystone Country Manor



**R E D E F I N I N G   C O N C R E T E   M A S O N R Y**





## RESIDENTIAL CMU

There's a concrete block perfectly suited to complement safety, strength and sustainability of the place you call home. Building a home using concrete masonry has many advantages. It's stronger than wood, resistant to weather conditions, termites, mold and fungus. These benefits, included with the ability to create dynamic exterior designs, make building with concrete masonry a real advantage.



**Project Name:** Private Residence  
Columbus, Texas

**Product:** Split Face CMU  
Custom Smooth CMU





Hunt Middle School - Acousta-Wal CMU

## ACOUSTA-WAL (SOUND BLOCK)

Whether it's a school gym, lecture hall or performance arts center, Acousta-Wal® is used as an indoor/outdoor solution to sound absorption and control. Its unique design controls sound transmission as it absorbs sound waves. Acousta-Wal absorbs sound at all frequencies, even difficult-to-control low frequencies.



**Project Name:** Cowboys Stadium  
Arlington, Texas

**Product:** Lightweight CMU

**Architect:** HKS Architects

## STANDARD GRAY MASONRY

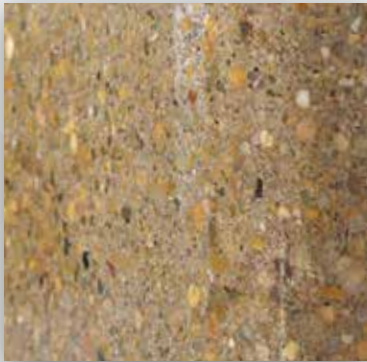
Standard Gray masonry units are used in a wide range of applications and provide strength, durability, fire resistance, sound proofing, energy efficiency, and affordability. *Best Block* Standard Gray units conform to the Concrete Masonry Associations standards for hollow load bearing masonry units and all weight classifications exceed ASTM C90 standard specifications.



REDEFINING CONCRETE MASONRY



## INTRODUCING OUR EXCLUSIVE **POLISHED & TEXTURED BLOCK,** ADDING VERSATILITY TO OUR GROUND FACE LINE OF CMU.



POLISHED FINISH



TEXTURED FINISH

**Polished Block** achieves a hi-gloss finish, similar to that of polished granite or marble.

**Our newest finish—Textured Block**—achieves a texture that exposes the depth of the natural aggregate, giving it a 3-D effect—something you'd have to feel to believe.

We use superior colored aggregates and a new, state-of-the-art polishing machine, exposing and buffing the aggregates of the concrete masonry unit. All of our concrete masonry units are provided with integral water repellants, and can be manufactured with bullnose, chamfered edges, or vertical scoring, all while meeting ASTM C90 standards and LEED standards.

For a sample box, please contact

**[blockinfo@bestblock.com](mailto:blockinfo@bestblock.com)**

\*The high-gloss finish gives you the effect of a sealed unit. However, we recommend a fully sealed wall assembly.







## OVERSIZE UNITS

Oversized concrete masonry units from *Best Block* are pre-finished and ready to bring a striking appearance to large scale walls, columns and accent areas. These stately CMUs feature one or more faces that are machine processed to produce three distinct finishes: polished, textured or ground face. Either choice brings out the beautiful, variegated color of the natural aggregates used to manufacture the units..



REDEFINING CONCRETE MASONRY



## ALL ARCHITECTURAL UNITS **FEATURE INTEGRAL COLOR,** ENSURING THE BEAUTY OF YOUR PROJECT **REMAINS TIMELESS.**

The concrete products shown are manufactured from natural materials and variations in color and/or texture are expected. The product presentations in this brochure and in our sample boxes are intended to represent general color range and texture only. To ensure your satisfaction, delivered material should be inspected and approved prior to installation. For specific color guidance, please work directly with your local *Best Block* architectural representative.

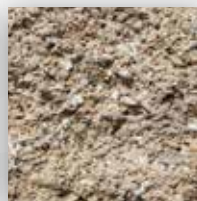
### NORTH TEXAS SPLIT FACE COLORS



ADOBE TAN



CINNAMON



DESERT BROWN



FLINT



LIMESTONE



WALNUT BROWN



MIDNIGHT



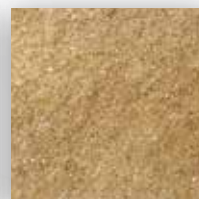
PALAMINO



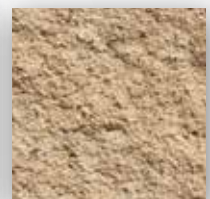
PAPRIKA



SHADOW BROWN



TEXAS BUFF



TEXAS WHEAT

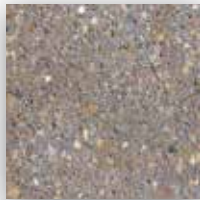


# STANDARD COLORS

AVAILABLE IN POLISHED OR TEXTURED FINISH



## GROUND FACE COLORS



BURNT UMBER



MOJAVE BROWN



CHARCOAL



CREAM



WHITE LIMESTONE



LIMESTONE BUFF



TERRA COTTA



SMOKE



ISLAND SAND



PECAN



ROSE TERRAZZO



SALT & PEPPER

## SOUTH TEXAS SPLIT FACE COLORS



BURNT UMBER



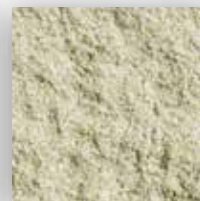
MOJAVE BROWN



CHARCOAL



LIMESTONE CREAM



WHITE LIMESTONE



LIMESTONE BUFF



TERRA COTTA



GRAY GRANITE



ISLAND SAND



WALGREEN BROWN



ALAMO BRICK RED



ANTIQUE BRASS

REDEFINING CONCRETE MASONRY

# ADDITIONAL PRODUCTS

We provide additional products to help with your design needs:

## Brick

- Clay Brick
- Antique Brick
- Thin Brick

## Masonry Accessories

- Bagged Goods
- Cleaners & Sealers
- Moisture Barriers
- Mortar
- Tools
- Wire

## Landscape/Hardscape Products

- Pavers
- Edgers
- Patio Stones

## Stone

- Eldorado Stone

## Foundation Repair Products

- Cylinders
- Pile caps
- Shims & Accessories

Please visit our website at [www.bestblock.com](http://www.bestblock.com) for a complete list of products available. You can also visit our website to download complete list of shapes, or please contact your local *Best Block* Architectural Representative for a complimentary brochure.

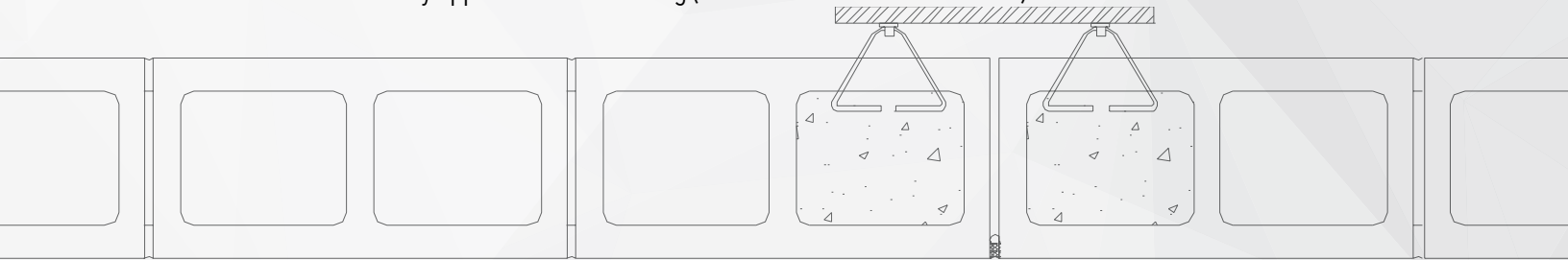


# DESIGN ASSISTANCE

***Best Block* understands the importance of specifications to your project.**

**All *Best Block* Split Face & Architectural Custom Masonry:**

- Complies with hollow load-bearing concrete masonry units specifications ASTM C 90 and non load-bearing concrete masonry units specifications C 129
- Is made of aggregate conforming to ASTM C 33 and ASTM C 331 standards
- Includes an integral water repellent agent to reduce water penetration and efflorescence
- Includes coloring agents of natural or synthetic oxides that are pure and fade-resistant
- Includes a factory-applied sacrificial coating (on Burnished and Polished units)

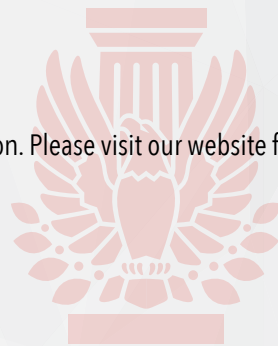


## Sample Kits

Please contact our architectural representatives at [blockinfo@bestblock.com](mailto:blockinfo@bestblock.com) to order a sample kit, and to provide assistance with color and finish specifications. Available kits – Split Face, Ground Face, Polished, Textured, Eldorado Stone, Thin and Antique Brick.

## Continuous Education

Contact us to schedule an AIA Continuing Education box luncheon presentation. Please visit our website for a list of available courses.



AIA



REDEFINING CONCRETE MASONRY

Committed to serving specifiers, contractors and installers across the country, Best Block manufactures the highest quality line of architectural and standard block as well as segmental retaining walls on the market. Offering products in a wide array of shapes, sizes, colors, textures and finishes, Best Block delivers strength, beauty and function to any residential or commercial project. A QUIKRETE Company, Best Block is a one-stop-shop for customers with advanced formula pre-blended mortars and grouts available through Spec Mix and QUIKRETE. Turn to Best Block for your next masonry project

**ALLEYTON**

**DALLAS**

**PALESTINE**

**HOUSTON**

**SAN ANTONIO**

**BATON ROUGE**

**[www.bestblock.com](http://www.bestblock.com)**

